

Vane Type Waterflow Detector

FIG. F6001
FIG. F6001T

Specifications

- Equipped with tamper resistant screws to prevent unauthorized entry.
- Two synchronized switches are enclosed in a durable terminal block. Terminals are easy to read and wire.
- Built-In mechanical time delay feature; minimizing the risk of false alarms due to pressure surges or air trapped in the system.
- Offers excellent performance during riser vibrations caused by large in-rushes of water.
- Designed and built for accuracy and repeatability.
- Flow sensitivity range: 4-10 GPM (15-38 LPM).
- Contact rating: 8A@250VAC, 3A@24VDC, 2.5A@30VDC.

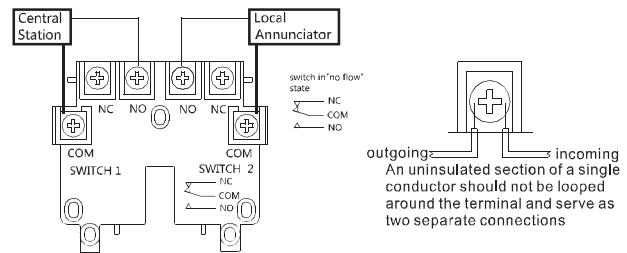
Working Pressure and Temperature

- 450psi @ 0°C- 68°C temperature.

Material Specifications

Size	Saddle	Cover
F6001	Aluminum B85 A04130	PC
	Ductile Iron, ASTMA536	Aluminum B85 A04130
F6001T	Bronze, B148 C95200	PC
		Aluminum B85 A04130

Typical Connections



Corrosion Protection

- Fusion Bonded Epoxy Coated Interior and Exterior or Enamel Spray Paint, Interior and Exterior.

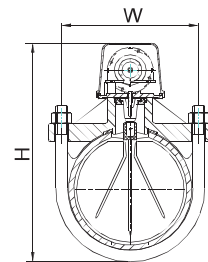
-UL/ULC Listed, FM Approved, GOST Certificated

F6001

Dimensions (mm / Inch)

Size	2	2.5	3	4
W	84 / 3.31	92 / 3.62	104 / 4.09	133 / 5.24
H	190 / 7.48	200 / 7.87	220 / 8.66	245 / 9.65
Nominal Pipe Size OD.	60.3 / 2.37	73 / 2.87	88.9 / 3.50	114.3 / 4.50
Pipe Wall Thickness	2.77-3.91/0.11-0.15	3.05-5.16/0.12-0.20	3.05-5.49/0.12-0.22	3.05-6.02/0.12-0.24

Size	5	6	8
W	160 / 6.30	187 / 7.36	239 / 9.41
H	270 / 10.63	300 / 11.8	350 / 13.78
Nominal Pipe Size OD.	141.3 / 5.56	168.3 / 6.63	219.1 / 8.63
Pipe Wall Thickness	3.40-6.55/0.13-0.26	3.40-7.11/0.13-0.28	3.76-8.18/0.15-0.32



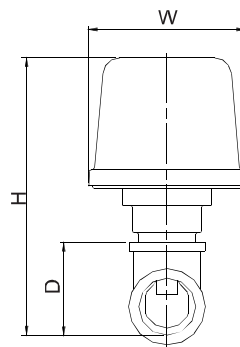
-UL/ULC Listed, FM Approved

F6001T

Dimensions (mm / Inch)

Size	1	1-1/4
W	93 / 3.67	93 / 3.67
H	164 / 6.46	172.5 / 6.79
D (Depth)	54 / 2.12	62.5 / 2.46

Size	1-1/2	2
W	93 / 3.67	93 / 3.67
H	179 / 7.05	192 / 7.56
D (Depth)	69 / 2.71	82 / 3.22



Notes

- Designs, materials and specifications shown are subject to change without notice due to the continuous development of our products.